

TM 11-6625-1549-24P

TECHNICAL MANUAL

**ORGANIZATIONAL DIRECT SUPPORT, AND GENERAL SUPPORT
MAINTENANCE REPAIR PARTS AND SPECIAL TOOLS LISTS
FOR
TEST SET, RADIO FREQUENCY POWER AN/USM-260
(NSN 6625-00-917-3099)**

HEADQUARTERS, DEPARTMENT OF THE ARMY

SEPTEMBER 1976

TECHNICAL MANUAL }
 NO. 11-6625-1549-24P }

HEADQUARTERS
 DEPARTMENT OF THE ARMY
 WASHINGTON, DC, 30 September 1976

**ORGANIZATIONAL, DIRECT SUPPORT AND GENERAL SUPPORT
 MAINTENANCE REPAIR PARTS AND SPECIAL TOOLS LIST
 FOR
 TEST SET, RADIO FREQUENCY POWER AN/USM-260
 (NSN 6625-00-917-3099)**

REPORTING OF ERRORS

You can improve this manual by recommending improvements using DA Form 2028-2 (Test) located in the back of the manual. Simply tear out the self-addressed form, fill it out as shown on the sample, fold it where shown and drop it in the mail.

If there are no blank DA Form 2028-2 (Test) in the back of your manual use the standard DA Form 2028 (Recommended Changes to Publications and Blank Forms) and forward to the Commander Army Electronics Command, ATTN; DRSEL-MA-Q, Fort Monmouth NJ 07703.

In either case a reply will be furnished direct to you.

	Page	Illus Figure
SECTION I. Introduction	1	
II. Repair parts list	5	
Group 00 Teat Set Radio Frequency Power AN/USM-260	4	1
Group 01 Test set Radio Frequency Power TS-2557/U	6	2
Amplifier, printed circuit board	8	3
Power supply printed circuit board	12	4
Switch assemblies	16	5
Mechanical parts	18	6
02 Power Cable CX-10546/U (no parts authorized)		
03 Cable CX-10547/U (no parts authorized)		
SECTION III Special tools list (not applicable)		
IV. National stock number and part number index	20	

Section I

INTRODUCTION

1. Scope

This manual lists repair parts required for performance of organization, direct support, and general support maintenance of Radio Frequency Power Test Set AN/USM-260.

2. General

This Repair Parts and Special Tools List is divided into the following sections:

a. Section II. Repair Parts List. A list of repair parts authorized for use in the performance of maintenance. The list also includes parts which must be removed for replacement of the authorized parts. Parts lists are composed of functional groups in ascending numerical sequence, with the parts in each group listed in figure and item numbr sequence.

b. Section III. Special Tools List. Not applicable.

c. Section IV. National Stock Number and Part Number Index. A list, in ascending numerical sequence, of all National stock number appearing in the listings, followed by a list, in alphanumeric sequence, of all part numbers appearing in the listings. National stock numbers and part numbers are cross-referenced to each illustration figure and item number appearance.

3. Explanation of Columns

The following provides an explanation of columns found in the tabular listings:

a. Illustration. This column is divided as follows

(1) *Figure number.* Indicates the figure number of the illustration in which the item is shown.

(2) *Item number.* The number used to identify each item called out in the illustration.

b. Source, Maintenance, and Recoverability Codes (SMR).

(1) *source code.* Source codes are assigned to support items to indicate the manner of acquiring support items for maintenance, repair, or overhaul of end items. Source codes are entered in the first and second positions of the Uniform SMR Code format as follows:

<i>Code</i>	<i>Definition</i>
-------------	-------------------

PA— Item procured and stocked for anticipated or known usage.

XD— A support item that is not stocked. When required, item will be procured through normal supply channels.

NOTE

Cannibalization or salvage may be used as a source of supply for any items source-coded above, except those coded XA, XD, and aircraft support items as restricted by AR 700-42.

(2) *Maintenance code.* Maintenance codes are assigned to indicate the levels of maintenance authorized to USE and REPAIR support items. The maintenance codes are entered in the third and fourth positions of the Uniform SMR Code format as follows:

(a) The maintenance code entered in the third position will indicate the lowest maintenance level authorized to remove, replace, and use the support item. The maintenance code entered in the third position will indicate one of the following levels of maintenance:

<i>Code</i>	<i>Application/Explanation</i>
-------------	--------------------------------

O— Support item is removed, replaced, used at the organizational level.

H— Support item is removed, replaced, used at the general support level.

(b) The maintenance code entered in the fourth position indicates whether the item is to be repaired and identifies the lowest maintenance level with the capability to perform complete repair (i.e., all authorized maintenance functions). This position will contain one of the following maintenance codes

<i>Code</i>	<i>Application/Explanation</i>
-------------	--------------------------------

H—The lowest maintenance level capable of complete repair of the support item is the general support level.

Z—Nonreparable. No repair is authorized.

(3) *Recoverability code.* Recoverability codes are assigned to support items to indicate the disposition action on unserviceable items. The recoverability code is entered in the fifth position of the Uniform SMR Code format as follows

<i>Recoverability Code</i>	<i>Definition</i>
----------------------------	-------------------

Z—Non reparable item. When unserviceable, condemn and dispose at the level indicated in position 3.

H—Repairable item. When uneconomically repairable, condemn and dispose at the general support level.

*Definition
Code*

Definition

D—Repairable item. When beyond lower level repair capability return to depot. Condemnation and disposal not authorized below depot level.

c. National Stock Number. Indicates the National stock number assigned to the item and will be used for requisitioning purposes.

d. Part Number. Indicates the primary number used by the manufacturer (individual, company, firm, corporation, or Government activity), which controls the design and characteristics of the item by means of its engineering drawings, specifications standards, and inspection requirements, to identify an item or range of items.

NOTE

When a stock-numbered item is requisitioned, the repair part received may have a different part number than the part being replaced.

e. Federal Supply Code for Manufacturer (FSCM). The FSCM is a 5-digit numeric code listed in SB 708-42 which is used to identify the manufacturer, distributor, or Government agency, etc.

f. Description. Indicates the Federal item name and, if required a minimum description to identify the item. When the part to be used differs between serial numbers of the same model, the effective serial numbers are shown as the last line of the description.

g. Unit of Measure (U/M). Indicates the standard of the basic quantity of the listed item as used in performing the actual maintenance function. This measure is expressed by a two-character alphabetical abbreviation (e.g., ea, in, pr, etc). When the unit of measure differs from the unit of issue, the lowest unit of issue that will satisfy the required units of measure will be requisitioned.

h. Quantity Incorporated in Unit. Indicates the

quantity of the item used in the breakout shown on the illustration figure, which is prepared for a functional group, subfunctional group, or an assembly.

4. Special Information.

The following publication pertains to the AN/USM-260 and its components: TM 11-6625-1549-15 Power Meter Model 431C.

5. How to Locate Repair Parts.

a. When National stock number or part number is unknown:

(1) *First.* Using the table of contents, determine the functional group within which the repair part belongs. This is necessary since illustrations are prepared for functional groups, and listings are divided into the same groups.

(2) *Second.* Find the illustration covering the functional group to which the repair part belongs.

(3) *Third.* Identify the repair part on the illustration and note the illustration figure and item number of the repair part.

(4) *Fourth.* Using the Repair Parts Listing, find the figure and item number noted on the illustration.

b. When National stock number or part number is known.

(1) *First.* Using the Index of National Stock Numbers and Part Numbers, find the pertinent National stock number or part number. This index is in ascending NSN sequence, followed by a list of part numbers in ascending alphanumeric sequence cross-referenced to the illustration figure number and item number.

(2) *Second.* After finding the figure and item number, locate the figure and item number in the repair parts list.

6. Abbreviations.

(Not applicable)

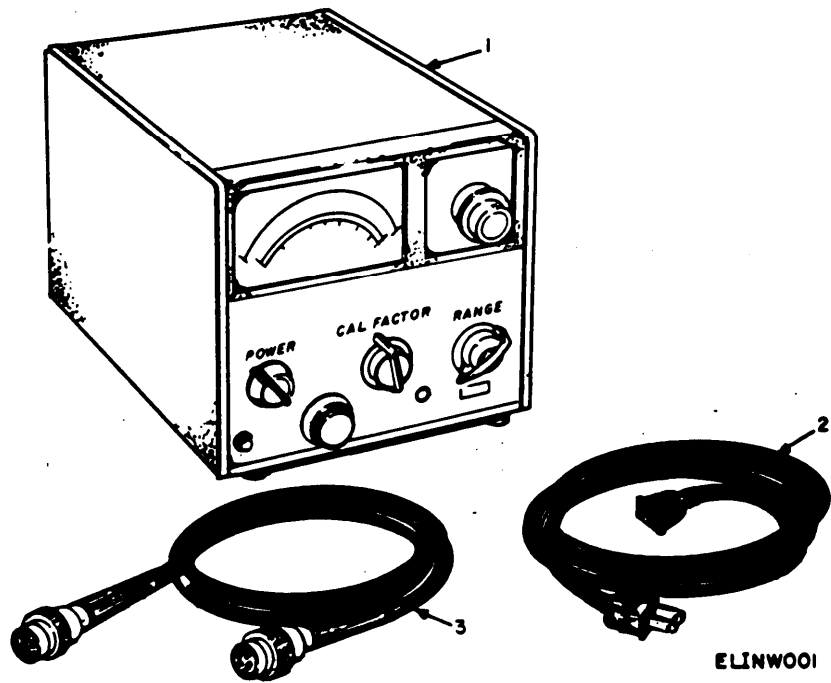


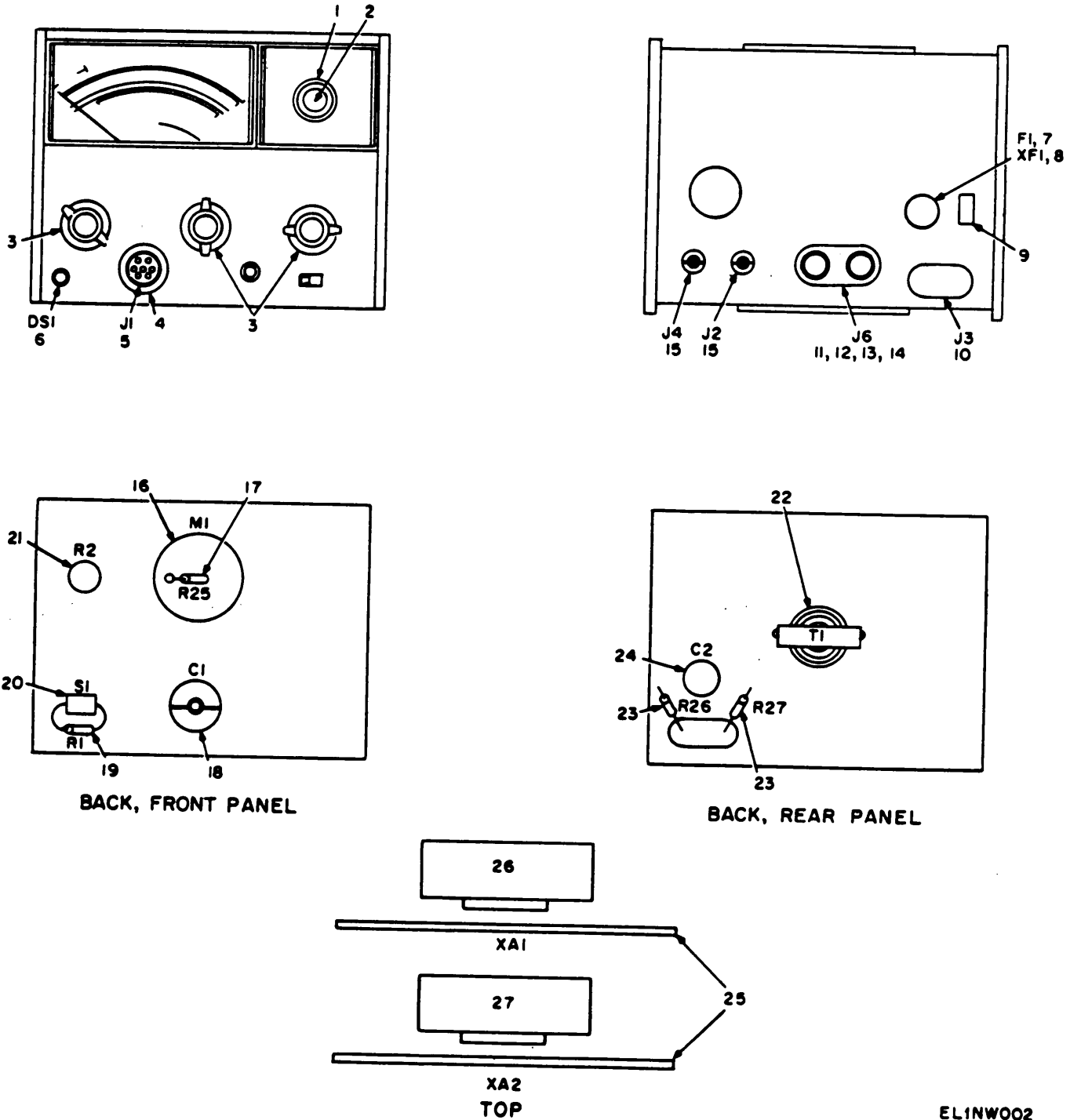
Figure 1. Test Set, Radio Frequency Power AN/USM-260.

SECTION II. REPAIR PARTS LIST

(1) ILLUSTRATION (A) FIG NO	(2) SMR (B) ITEM NO	(3) NATIONAL STOCK NUMBER	(4) PART NUMBER	(5) FSCM	(6) DESCRIPTION	(7) USABLE ON MEAS CODE	(8) UNIT OF IN UNIT
--------------------------------------	------------------------------	------------------------------------	-----------------------	-------------	--------------------	----------------------------------	---------------------------------

GROUP 00: TEST SET,RADIO FREQUENCY POWER AN/USM-260

1	1	PAHHD 6625-00-917-3099	431C	28480	POWER METER TS-2557/U	EA	1
1	2	PAHZZ 5995-00-995-9822	8120-0078	28480	CABLE, POWER CX-10546/U	EA	1
1	3	PAHZZ 5995-00-484-1104	8120-1082	28480	CABLE ASSEMBLY THERMISTER CX-10547/U	EA	1

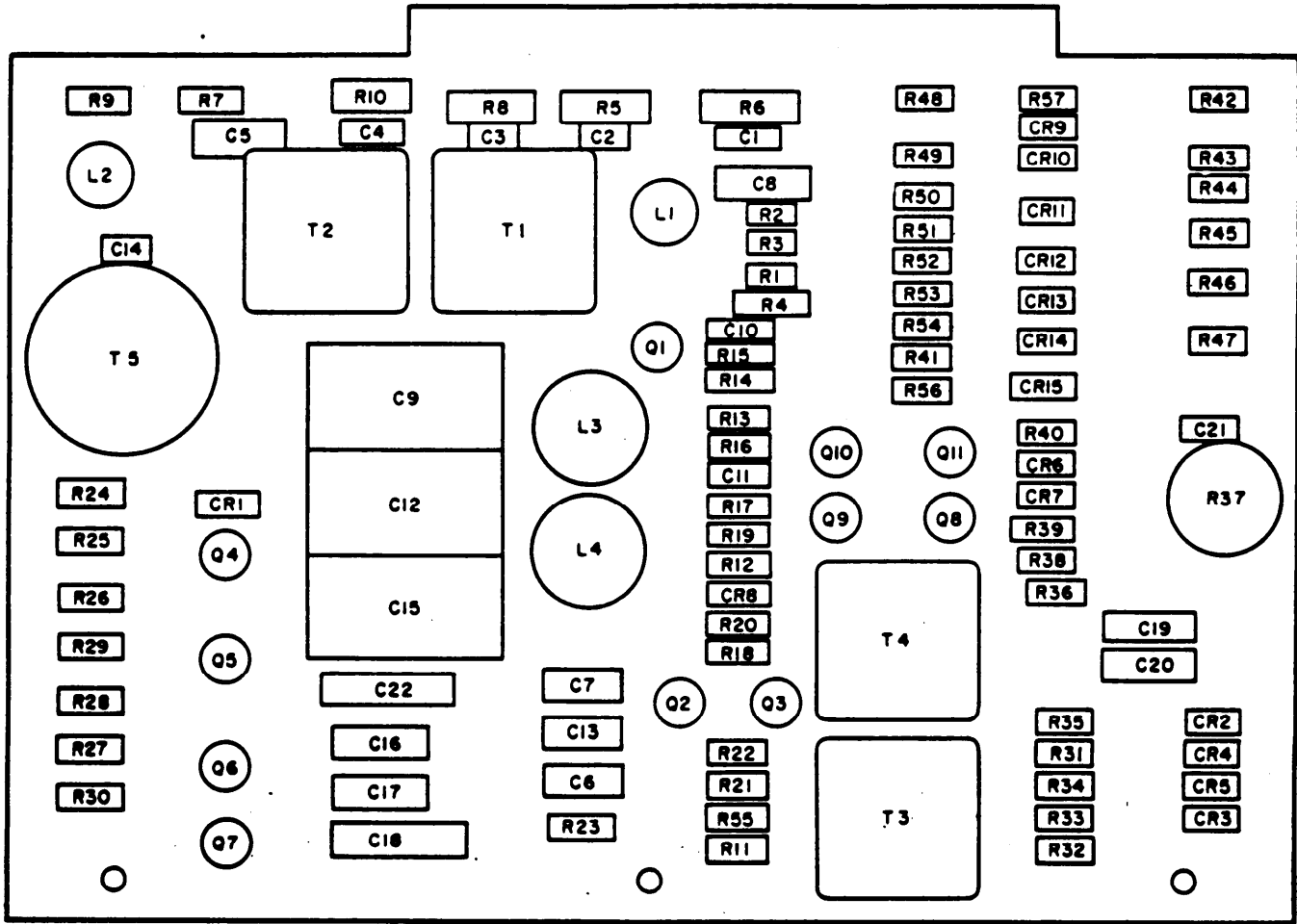


EL1NW002

Figure 2. Test Set, Radio Frequency Power TS-2557/U

SECTION II. REPAIR PARTS LIST (CONTINUED)

(1) ILLUSTRATION (A) FIG NO	(2) SMR (B) ITEM NO	(3) NATIONAL STOCK NUMBER	(4) PART NUMBER	(5) FSCM	(6) DESCRIPTION	(7) UNIT OF MEAS USABLE ON CODE	(8) QTY INC IN UNIT
GROUP 01: TEST SET, RADIO FREQUENCY POWER TS-2557/U							
2	1	PAOZZ 5355-00-976-4343	0370-0064	28480	KNOB, VERNIER	EA	1
2	2	PAOZZ 5355-00-809-9330	0370-0067	28480	KNOB, CONCENTRIC	EA	1
2	3	PAOZZ 5355-00-919-9953	0370-0112	28480	KNOB, BAR, W/ARROW	EA	3
2	4	XDHZZ	1251-1281	28480	NUT, KNURLED	EA	1
2	5	PAHZZ 5935-00-877-2663	1251-1280	28480	CONNECTOR 6 FEMALE CONTACTS	EA	1
2	5	XDHZZ	1251-0149	28480	CONNECTOR 6 FEMALE CONTACTS (USED ON SN 548-651)	EA	1
2	6	PAHZZ 6210-00-761-8898	1450-0048	28480	LAMP, NEON	EA	1
2	7	PAOZZ 5920-00-543-0006	313.150	75915	FUSE, .25 AMP, 250 V	EA	1
2	7	PAOZZ 5920-00-798-5710	2110-0004	28480	FUSE, .25 AMP, 250 V	EA	1
2	8	PAHZZ 5920-00-881-4636	342014	75915	HOLDER, FUSE, POST TYPE 3AG	EA	1
2	9	PAHZZ 5930-00-406-8746	3101-1234	28480	SWITCH	EA	1
2	10	XDHZZ	H-1061-2	60427	CONNECTOR, POWER, 3 PIN	EA	1
2	11	PAHZZ 5940-00-815-2612	1510-0006	28480	BINDING POST ASSEMBLY, BLACK	EA	1
2	12	XDHZZ	1510-0007	28480	BINDING POST ASSEMBLY, RED	EA	1
2	13	PAHZZ 5970-00-269-7037	0340-0086	28480	INSULATOR, BINDING POST	EA	1
2	14	PAHZZ 5970-00-225-8549	0340-0090	28480	INSULATOR, BINDING POST, DOUBLE	EA	1
2	15	PAHZZ 5935-00-804-5144	1250-0083	28480	CONNECTOR, BNC	EA	2
2	16	PAHZZ 6625-00-833-2336	1120-1101	28480	METER	EA	1
2	17	XDHZZ	0698-4722	28480	RESISTOR, FIXED, 17.8K OHM	EA	1
2	17	XDHZZ	0698-XXXX	28480	RESISTOR, FIXED, 17.8K TO INFINITY (USED ON SN548-651)	EA	1
2	18	PAHZZ 5910-00-918-4348	0121-0035	28480	CAPACITOR, VARIABLE, AIR DIELECTRIC	EA	1
2	19	PAHZZ 5905-00-974-6079	0698-3444	28480	RESISTOR, FIXED, MET FLM (USED ON SN 548-651)	EA	1
2	20	PAHHH 6625-00-724-1679	00431-6005	28480	SWITCH ASSEMBLY, INCL R1 (USED ON SN 548-651)	EA	1
2	20	XDHZZ	00431-6025	28480	SWITCH ASSEMBLY	EA	1
2	21	XDHZZ	2100-2631	28480	RESISTOR, VARIABLE, WIREWOUND	EA	1
2	21	PAHZZ 5905-00-930-8643	2100-0342	28480	RESISTOR, VARIABLE, WIREWOUND (USED ON SN 548-651)	EA	1
2	22	PAHZZ 5950-00-891-4206	9100-0400	28480	TRANSFORMER, POWER	EA	1
2	23	PAHZZ 5905-00-981-7529	0757-0401	28480	RESISTOR, FIXED, MET FLM (USED ON SN 548-651)	EA	2
2	23	PAHZZ 5905-00-830-6188	0757-0198	28480	RESISTOR, FIXED, MET FLM	EA	2
2	24	PAHZZ 5910-00-059-2305	36C219A	56289	CAPACITOR, FIXED, CERAMIC, DIELECTRIC	EA	1
2	25	XDHZZ	1251-2239	28480	CONNECTOR, PRINTED CIRCUIT	EA	2
2	25	PAHZZ 5935-00-999-4723	1251-0233	28480	CONNECTOR, PRINTED CIRCUIT (USED ON SN 548-651)	EA	2
2	26	PAHHH 6625-00-735-7489	00431-6009	28480	BOARD ASSEMBLY, POWER SUPPLY (A2) (USED ON SN 548-651)	EA	1
2	26	PAHHH 6625-00-735-7489	00431-6009	28480	BOARD ASSEMBLY, POWER SUPPLY (A2) (USED ON SN 548-651)	EA	1
2	27	PAHHH 6625-00-890-3022	00431-6018	28480	BOARD ASSEMBLY, AMPLIFIER (A1)	EA	1
2	27	PAHHH 6625-00-935-5053	00431-6001	28480	BOARD ASSEMBLY, AMPLIFIER (A1) (USED ON SN 548-651)	EA	1



REF DES	ITEM NO	REF DES	ITEM NO	REF DES	ITEM NO	REF DES	ITEM NO	REF DES	ITEM NO	REF DES	ITEM NO	REF DES	ITEM NO	REF DES	ITEM NO
C1	1	C16	4	CR8	11	Q4	17	R8	24	R23	35	R38	44	R53	58
C2	2	C17	4	CR9	13	Q5	16	R9	25	R24	36	R39	27	R54	47
C3	1	C18	8	CR10	13	Q6	17	R10	26	R25	37	R40	45	R55	59
C4	3	C19	9	CR11	13	Q7	16	R11	27	R26	38	R41	46	R56	46
C5	3	C20	9	CR12	13	Q8	16	R12	28	R27	39	R42	47	R57	60
C6	4	C21	7	CR13	13	Q9	16	R13	29	R28	40	R43	48	T1	61
C7	4	C22	10	CR14	13	Q10	17	R14	30	R29	20	R44	49	T2	61
C8	5	CR1	11	CR15	13	Q11	17	R15	31	R30	39	R45	50	T3	62
C9	6	CR2	12	L1	14	R1	18	R16	29	R31	32	R46	51	T4	62
C10	7	CR3	12	L2	14	R2	19	R17	32	R32	32	R47	52	T5	63
C11	7	CR4	12	L3	15	R3	19	R18	31	R33	32	R48	53		
C12	6	CR5	12	L4	15	R4	20	R19	33	R34	32	R49	54		
C13	4	CR6	13	Q1	16	R5	21	R20	34	R35	41	R50	55		
C14	4	CR7	11	Q2	17	R6	22	R21	34	R36	42	R51	56		
C15	6			Q3	16	R7	23	R22	29	R37	43	R52	57		

ELINW003

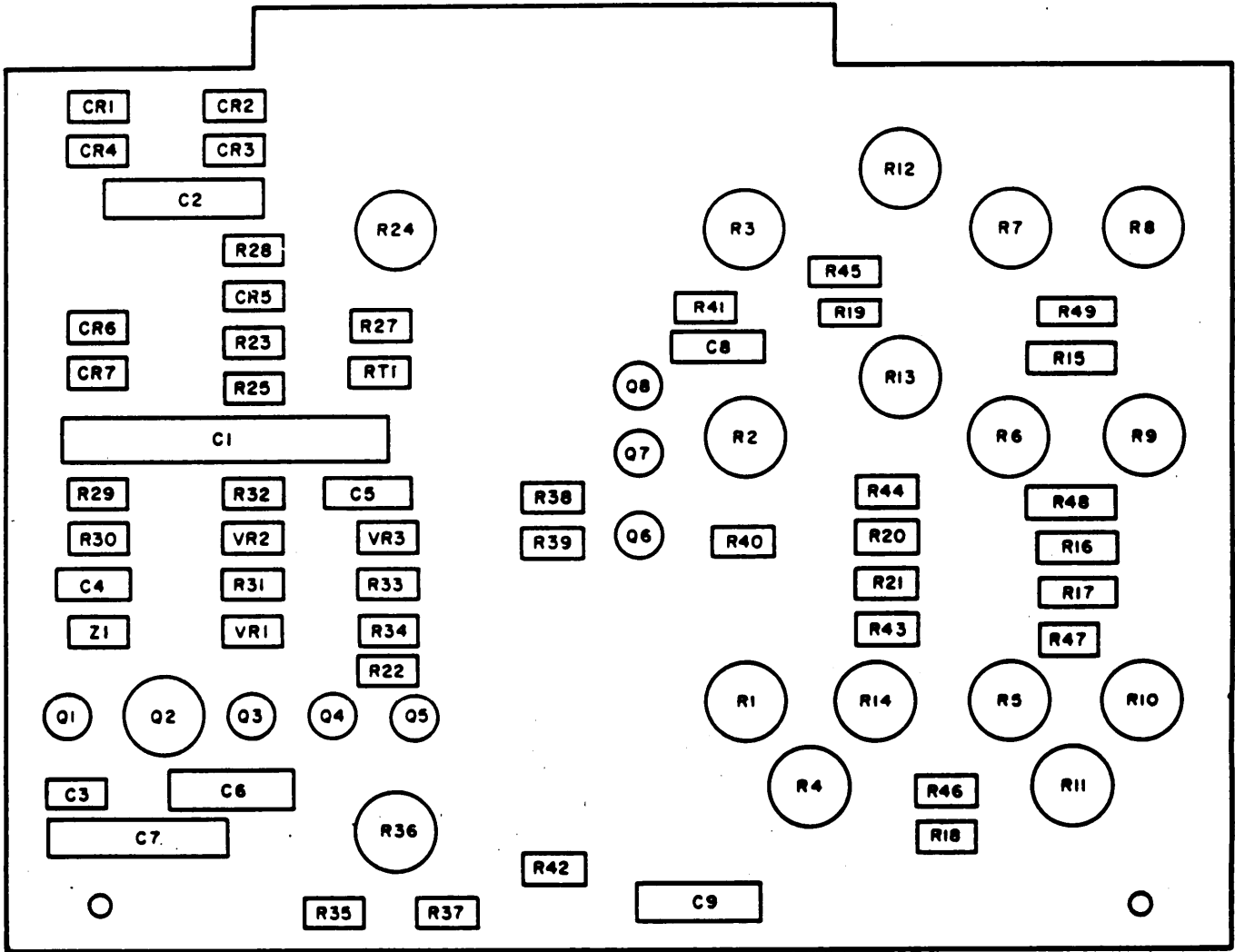
Figure 3. Amplifier, printed circuit board.

SECTION II. REPAIR PARTS LIST (CONTINUED)

(1) ILLUSTRATION (A) (B) FIG NO	(2) SMR CODE	(3) NATIONAL STOCK NUMBER	(4) PART NUMBER	(5) FSCM	(6) DESCRIPTION	(7) UNIT OF MEAS IN UNIT	(8) QTY INC IN UNIT
3	1	PAHZZ	5910-00-914-2605	0140-0198	28480	CAPACITOR, FIXED, MICA DIELECTRIC	EA 2
3	2	PAHZZ	5910-00-089-3496	0160-2201	28480	CAPACITOR, FIXED, MICA DIELECTRIC	EA 1
3	3	PAHZZ	5910-00-472-5004	0160-0136	28480	CAPACITOR, FIXED, MICA DIELECTRIC	EA 2
3	3	PAHZZ	5910-00-912-7614	0160-0185	28480	CAPACITOR, FIXED, MICA DIELECTRIC (USED ON SN 548-651)	EA 2
3	4	PAHZZ	5910-00-104-0145	150D685X9035B2	56289	CAPACITOR, FIXED, ELECTROLYTIC	EA 6
3	5	PAHZZ	5910-00-803-4373	150D606X0006B2	56289	CAPACITOR, FIXED, ELECTROLYTIC	EA 1
3	6	PAHZZ	5910-00-965-9722	114P1042R5S3	56289	CAPACITOR, FIXED, POLYSTRENE DIELECTRIC	EA 3
3	7	PAHZZ	5910-00-883-0838	5C11A	56289	CAPACITOR, FIXED, CERAMIC, DIELECTRIC	EA 3
3	8	XDHZZ		0180-0049	28480	CAPACITOR, FIXED, ELECTROLYTIC	EA 1
3	9	PAHZZ	5910-00-080-1890	30D206G025DB-6M1	56289	CAPACITOR, FIXED, ELECTROLYTIC	EA 2
3	10	XDHZZ		0140-0159	28480	CAPACITOR, FIXED, MICA DIELECTRIC	EA 1
3	11	PAHZZ	5961-00-978-7468	1901-0025	28480	SEMICONDUCTOR, JUNCTION	EA 3
3	12	PAHZZ	5961-00-954-9182	1910-0016	28480	SEMICONDUCTOR, GERMANIUM	EA 4
3	13	PAHZZ	5961-00-931-7022	1901-0450	28480	SEMICONDUCTOR, SILICON	EA 8
3	14	PAHZZ	5950-00-761-8876	9140-0122	28480	COIL, VARIABLE	EA 2
3	15	PAHZZ	5950-00-761-8879	9110-0040	28480	INDUCTOR, AUDIO	EA 2
3	16	PAHZZ	5961-00-904-2540	1853-0020	28480	TRANSISTOR, SILICON	EA 6
3	17	PAHZZ	5961-00-137-4608	1854-0071	28480	TRANSISTOR, SILICON	EA 5
3	18	XDHZZ		0811-0066	28480	RESISTOR, FIXED, WIREWOUND	EA 1
3	19	PAHZZ	5905-00-918-7642	0811-0065	28480	RESISTOR, FIXED, WIREWOUND	EA 2
3	20	PAHZZ	5905-00-981-7513	0757-0199	28480	RESISTOR, FIXED, METAL FILM	EA 2
3	21	PAHZZ	5905-00-877-8955	0811-1571	28480	RESISTOR, FIXED, WIREWOUND	EA 1
3	22	PAHZZ	5905-00-561-4553	0811-1572	28480	RESISTOR, FIXED, WIREWOUND	EA 1
3	23	PAHZZ	5905-00-858-8959	0757-0466	28480	RESISTOR, FIXED, WIREWOUND	EA 1
3	24	PAHZZ	5905-00-561-4653	0811-1645	28480	RESISTOR, FIXED, WIREWOUND	EA 1
3	25	PAHZZ	5905-00-954-8684	0757-0123	28480	RESISTOR, FIXED, WIREWOUND	EA 1
3	26	PAHZZ	5905-00-828-0375	0811-1566	28480	RESISTOR, FIXED, METAL FILM	EA 1
3	27	PAHZZ	5905-00-858-9417	0757-0417	28480	RESISTOR, FIXED, METAL FILM	EA 2
3	28	PAHZZ	5905-00-917-0580	0757-1094	28480	RESISTOR, FIXED, METAL FILM	EA 1
3	29	PAHZZ	5905-00-221-8310	0757-0279	28480	RESISTOR, FIXED, METAL FILM	EA 3
3	30	PAHZZ	5905-00-998-1814	0698-0085	28480	RESISTOR, FIXED, METAL FILM	EA 1
3	31	PAHZZ	5905-00-858-6795	0757-0440	28480	RESISTOR, FIXED, METAL FILM	EA 2
3	32	PAHZZ	5905-00-853-8190	0757-0280	28480	RESISTOR, FIXED, METAL FILM	EA 5
3	33	PAHZZ	5905-00-974-6084	0698-3156	28480	RESISTOR, FIXED, METAL FILM	EA 1
3	34	PAHZZ	5905-00-433-6904	0698-3157	28480	RESISTOR, FIXED, METAL FILM	EA 2
3	35	PAHZZ	5905-00-974-6080	0698-3438	28480	RESISTOR, FIXED, METAL FILM	EA 1
3	36	PAHZZ	5905-00-904-4412	0757-0465	28480	RESISTOR, FIXED, METAL FILM	EA 1
3	37	PAHZZ	5905-00-826-3239	0698-3452	28480	RESISTOR, FIXED, METAL FILM	EA 1
3	38	PAHZZ	5905-00-828-0377	0698-3440	28480	RESISTOR, FIXED, METAL FILM	EA 1
3	39	PAHZZ	5905-00-998-1792	0757-0442	28480	RESISTOR, FIXED, METAL FILM	EA 2
3	40	PAHZZ	5905-00-974-6078	0698-3160	28480	RESISTOR, FIXED, METAL FILM	EA 1
3	41	PAHZZ	5905-00-974-6073	0698-0084	28480	RESISTOR, FIXED, METAL FILM	EA 1
3	42	PAHZZ	5905-00-826-3262	0698-3450	28480	RESISTOR, FIXED, METAL FILM	EA 1

SECTION II. REPAIR PARTS LIST (CONTINUED)

(1) ILLUSTRATION (A) FIG NO	(2) SMR (B) ITEM NO	(3) NATIONAL STOCK NUMBER	(4) PART NUMBER	(5) FSCM	(6) DESCRIPTION	USABLE ON CODE	(7) UNIT OF MEAS	(8) QTY INC IN UNIT
3	43	PAHZZ 5905-00-879-5361	2100-0144	28480	RESISTOR, VARIABLE, COMPOSITION		EA	1
3	44	PAHZZ 5905-00-828-0404	0698-3447	28480	RESISTOR, FIXED, METAL FILM		EA	1
3	45	PAHZZ 5905-00-858-9105	0757-0274	28480	RESISTOR, FIXED, METAL FILM		EA	1
3	46	PAHZZ 5905-00-828-0397	0698-3449	28480	RESISTOR, FIXED, METAL FILM		EA	2
3	47	PAHZZ 5905-00-826-3264	0698-4028	28480	RESISTOR, FIXED, METAL FILM		EA	2
3	48	PAHZZ 5905-00-826-3282	0698-4029	28480	RESISTOR, FIXED, METAL FILM		EA	1
3	49	PAHZZ 5905-00-826-3288	0698-4027	28480	RESISTOR, FIXED, METAL FILM		EA	1
3	50	PAHZZ 5905-00-826-3315	0698-4026	28480	RESISTOR, FIXED, METAL FILM		EA	1
3	51	PAHZZ 5905-00-826-3237	0698-4025	28480	RESISTOR, FIXED, METAL FILM		EA	1
3	52	PAHZZ 5905-00-826-3241	0698-4024	28480	RESISTOR, FIXED, METAL FILM		EA	1
3	53	PAHZZ 5905-00-826-3238	0698-4023	28480	RESISTOR, FIXED, METAL FILM		EA	1
3	54	PAHZZ 5905-00-826-3306	0698-4034	28480	RESISTOR, FIXED, METAL FILM		EA	1
3	55	PAHZZ 5905-00-826-3284	0698-4033	28480	RESISTOR, FIXED, METAL FILM		EA	1
3	56	PAHZZ 5905-00-826-3281	0698-4032	28480	RESISTOR, FIXED, METAL FILM		EA	1
3	57	XDHZZ	0698-4031	28480	RESISTOR, FIXED, METAL FILM		EA	1
3	58	PAHZZ 5905-00-826-3256	0698-4030	28480	RESISTOR, FIXED, METAL FILM		EA	1
3	59	PAHZZ 5905-00-974-6075	0698-0082	28480	RESISTOR, FIXED, METAL FILM		EA	1
3	59	PAHZZ 5905-00-917-0580	0757-1094	28480	RESISTOR, FIXED, METAL FILM (USED ON SN 548-651)		EA	1
3	60	PAHZZ 5905-00-561-4512	0698-3582	28480	RESISTOR, FIXED, METAL FILM (USED ON SN 770 AND ABOVE)		EA	1
3	61	PAHZZ 5950-00-761-8877	9120-0066	28480	TRANSFORMER, AUDIO		EA	2
3	62	PAHZZ 5950-00-761-8878	9120-0065	28480	TRANSFORMER, AUDIO		EA	2
3	63	PAHZZ 5950-00-089-9738	9100-1677	28480	TRANSFORMER, INPUT		EA	1



REF DES	ITEM NO.	REF DES	ITEM NO.	REF DES	ITEM NO.	REF DES	ITEM NO.
C1	1	Q5	15	R17	23	R41	44
C2	2	Q6	15	R18	24	R42	45
C3	3	Q7	15	R19	25	R43	46
C4	4	Q8	13	R20	26	R44	47
C5	5	R1	16	R21	27	R45	48
C6	6	R2	17	R22	28	R46	49
C7	7	R3	18	R23	29	R47	50
C8	8	R4	18	R24	30	R48	51
C9	9	R5	19	R25	31	R49	52
CR1	10	R6	20	R26	-	RT1	53
CR2	10	R7	20	R27	32	VR1	54
CR3	10	R8	19	R28	33	VR2	54
CR4	10	R9	18	R29	34	VR3	55
CR5	11	R10	18	R30	35	Z1	56
CR6	12	R11	16	R31	33		
CR7	12	R12	16	R32	36		
Q1	13	R13	16	R33	37		
Q2	14	R14	16	R34	38		
Q3	13	R15	21	R35	39		
Q4	15	R16	22	R36	40		

ELINW004

Figure 4. Power supply, printed circuit board.

SECTION II. REPAIR PARTS LIST (CONTINUED)

(1) ILLUSTRATION (A) FIG NO	(2) SMR (B) ITEM NO	(3) NATIONAL STOCK NUMBER	(4) PART NUMBER	(5) FSCM	(6) DESCRIPTION	(7) UNIT OF MEAS	(8) QTY INC IN UNIT
						USABLE ON CODE	
4	1	PAHZZ 5910-00-067-8305	D36254	56289	CAPACITOR, FIXED, ELECTROLYTIC	EA	1
4	2	XDHZZ	30206G050DC6M1	56289	CAPACITOR, FIXED, ELECTROLYTIC	EA	1
4	3	PAHZZ 5910-00-542-2010	0150-0093	28480	CAPACITOR, FIXED, CERAMIC, DIELECTRIC	EA	1
4	4	PAHZZ 5910-00-851-7794	0150-0012	28480	CAPACITOR, FIXED, CERAMIC, DIELECTRIC	EA	1
4	5	PAHZZ 5910-00-883-0838	5C11A	56289	CAPACITOR, FIXED, CERAMIC DIELECTRIC	EA	1
4	6	PAHZZ 5910-00-889-4854	30D106G025BB4	56289	CAPACITOR, FIXED, ELECTROLYTIC	EA	1
4	7	PAHZZ 5910-00-809-3431	D34114	56289	CAPACITOR, FIXED, ELECTROLYTIC	EA	1
4	8	PAHZZ 5910-00-542-1796	0150-0096	28480	CAPACITOR, FIXED, CERAMIC, DIELECTRIC	EA	1
4	9	PAHZZ 5910-00-893-5182	30D207G003DC4	56289	CAPACITOR, FIXED, ELECTROLYTIC	EA	1
4	10	PAHZZ 5961-00-978-7468	1901-0025	28480	SEMICONDUCTOR, JUNCTION	EA	4
4	11	PAHZZ 5961-00-752-5226	1910-0016	28480	SEMICONDUCTOR, GERMANIUM	EA	1
4	12	PAHZZ 5961-00-060-8638	1901-0026	28480	SEMICONDUCTOR, SILICON	EA	2
4	13	PAHZZ 5961-00-904-2540	1853-0020	28480	TRANSISTOR, SILICON, PNP	EA	3
4	14	PAHZZ 5961-00-978-9041	2N1183	81349	TRANSISTOR, GERMANIUM, PNP	EA	1
4	15	PAHZZ 5961-00-137-4608	1854-0071	28480	TRANSISTOR, SILICON, NPN	EA	4
4	16	PAHZZ 5905-00-105-1773	2100-1774	28480	RESISTOR, VARIABLE, COMPOSITION	EA	5
4	16	PAHZZ 5905-00-927-5070	2100-1612	28480	RESISTOR, VARIABLE (USED ON SN 548-651 R11 & R12 ONLY)	EA	2
4	16	PAHZZ 5905-00-877-5757	2100-1617	28480	RESISTOR, VARIABLE (USED ON SN 548-651 R13 ONLY)	EA	1
4	16	PAHZZ 5905-00-927-5071	2100-1613	28480	RESISTOR, VARIABLE, COMPOSITION (USED ON SN 548-651 R1 & R14 ONLY)	EA	2
4	17	PAHZZ 5905-00-115-7158	2100-1773	28480	RESISTOR, VARIABLE, COMPOSITION	EA	1
4	17	PAHZZ 5905-00-877-5757	2100-1617	28480	RESISTOR, VARIABLE, COMPOSITION (USED ON SN 548-651)	EA	1
4	18	PAHZZ 5905-00-877-5747	2100-1615	28480	RESISTOR, VARIABLE (USED ON SN 548-651 R9 ONLY)	EA	1
4	18	XDHZZ	2100-1616	28480	RESISTOR, VARIABLE (USED ON SN 548-651 R10 ONLY)	EA	1
4	18	PAHZZ 5905-00-891-4221	2100-1772	28480	RESISTOR, VARIABLE, WIREWOUND	EA	4
4	18	PAHZZ 5905-00-927-5070	2100-1612	28480	RESISTOR, VARIABLE, WIREWOUND (USED ON SN 548-651 R3 & R4 ONLY)	EA	4
4	19	PAHZZ 5905-00-891-4218	2100-1771	28480	RESISTOR, VARIABLE, WIREWOUND	EA	2
4	19	XDHZZ	2100-1616	28480	RESISTOR, VARIABLE, WIREWOUND (USED ON SN 548-651 R5 ONLY)	EA	2
4	19	PAHZZ 5905-00-877-5747	2100-1615	28480	RESISTOR, VARIABLE, (USED ON SN 548-651 R8 ONLY)	EA	2
4	20	PAHZZ 5905-00-891-4229	2100-1770	28480	RESISTOR, VARIABLE, COMPOSITION	EA	2
4	20	PAHZZ 5905-00-877-5747	2100-1615	28480	RESISTOR, VARIABLE, COMPOSITION (USED ON SN 548-651)	EA	2
4	21	PAHZZ 5905-00-828-0414	0698-3337	28480	RESISTOR, FIXED, METAL FILM	EA	1
4	22	PAHZZ 5905-00-826-3316	0757-0826	28480	RESISTOR, FIXED, METAL FILM	EA	1
4	23	PAHZZ 5905-00-858-6792	0757-0436	28480	RESISTOR, FIXED, METAL FILM	EA	1
4	24	PAHZZ 5905-00-858-6795	0757-0440	28480	RESISTOR, FIXED, METAL FILM	EA	1
4	25	PAHZZ 5905-00-499-2013	0698-3581	28480	RESISTOR, FIXED, METAL FILM	EA	1
4	26	PAHZZ 5905-00-981-7478	0757-0451	28480	RESISTOR, FIXED, METAL FILM	EA	1
4	27	PAHZZ 5905-00-877-5769	0757-0456	28480	RESISTOR, FIXED, METAL FILM	EA	1
4	28	PAHZZ 5905-00-981-7529	0757-0401	28480	RESISTOR, FIXED, METAL FILM	EA	1
4	28	PAHZZ 5905-00-561-4512	0698-3582	28480	RESISTOR, FIXED, METAL FILM (USED ON SN 548-651)	EA	1
4	29	PAHZZ 5905-00-828-0409	0698-0063	28480	RESISTOR, FIXED, METAL FILM (USED ON SN 548-651)	EA	1
4	30	PAHZZ 5905-00-891-4229	2100-1770	28480	RESISTOR, VARIABLE, COMPOSITION	EA	1
4	30	PAHZZ 5905-00-877-5747	2100-1615	28480	RESISTOR, VARIABLE, COMPOSITION (USED ON SN 548-651)	EA	1

SECTION II. REPAIR PARTS LIST (CONTINUED)

(1) ILLUSTRATION (A) FIG NO	(2) SMR (B) ITEM NO	(3) NATIONAL STOCK NUMBER	(4) PART NUMBER	(5) FSCM	(6) DESCRIPTION	USABLE ON CODE	(7) UNIT OF MEAS	(8) QTY INC IN UNIT
4	31	PAHZZ 5905-00-929-7774	0757-0399	28480	RESISTOR, FIXED, METAL FILM		EA	1
4	32	XDHZZ	0699-0003	28480	RESISTOR, FIXED, COMPOSITION		EA	1
4	32	PAHZZ 5905-00-835-2819	0811-1562	28480	RESISTOR, FIXED, WIREWOUND		EA	1
4	33	PAHZZ 5905-00-221-8310	0757-0279	28480	RESISTOR, FIXED, METAL FILM		EA	2
4	34	PAHZZ 5905-00-976-3418	0698-3155	28480	RESISTOR, FIXED, METAL FILM		EA	1
4	35	PAHZZ 5905-00-828-0388	0698-3132	28480	RESISTOR, FIXED, METAL FILM		EA	1
4	36	PAHZZ 5905-00-858-9105	0757-0274	28480	RESISTOR, FIXED, METAL FILM		EA	1
4	36	PAHZZ 5905-00-976-3418	0698-3155	28480	RESISTOR, FIXED, METAL FILM (USED O N SN 548-651)		EA	1
4	37	PAHZZ 5905-00-998-1792	0757-0442	28480	RESISTOR, FIXED, METAL FILM		EA	1
4	37	PAHZZ 5905-00-221-8310	0757-0279	28480	RESISTOR, FIXED, METAL FILM (USED ON SN 548-651)		EA	1
4	38	PAHZZ 5905-00-990-0303	0757-0439	28480	RESISTOR, FIXED, METAL FILM		EA	1
4	38	XDHZZ	0757-0278	28480	RESISTOR, FIXED, METAL FILM (USED ON SN 548-651)		EA	1
4	39	PAHZZ 5905-00-998-1792	0757-0442	28480	RESISTOR, FIXED, METAL FILM		EA	1
4	39	PAHZZ 5905-00-976-3418	0698-3155	28480	RESISTOR, FIXED, METAL FILM (USED ON SN 548-651 R37 ONLY)		EA	1
4	40	PAHZZ 5905-00-105-1773	2100-1774	28480	RESISTOR, VARIABLE, COMPOSITION		EA	1
4	40	PAHZZ 5905-00-769-5449	2100-0182	28480	RESISTOR, FIXED, METAL FILM (USED O N SN 548-651 R36 ONLY)		EA	1
4	41	PAHZZ 5905-00-499-2009	0698-3491	28480	RESISTOR, FIXED, METAL FILM		EA	1
4	42	PAHZZ 5905-00-858-8826	0757-0290	28480	RESISTOR, FIXED, METAL FILM		EA	1
4	43	PAHZZ 5905-00-764-2026	0757-0463	28480	RESISTOR, FIXED, METAL FILM		EA	1
4	44	PAHZZ 5905-00-858-6799	0757-0441	28480	RESISTOR, FIXED, METAL FILM		EA	1
4	45	PAHZZ 5905-00-972-4907	0757-0180	28480	RESISTOR, FIXED, METAL FILM		EA	1
4	46	PAHZZ 5905-00-858-8959	0757-0460	28480	RESISTOR, FIXED, METAL FILM		EA	1
4	47	PAHZZ 5905-00-954-8684	0757-0123	28480	RESISTOR, FIXED, METAL FILM		EA	1
4	48	PAHZZ 5905-00-911-5782	0757-0448	28480	RESISTOR, FIXED, METAL FILM		EA	1
4	49	PAHZZ 5905-00-998-1792	0757-0442	28480	RESISTOR, FIXED, METAL FILM		EA	1
4	50	PAHZZ 5905-00-858-8826	0757-0290	28480	RESISTOR, FIXED, METAL FILM		EA	1
4	51	XDHZZ	0698-3411	28480	RESISTOR, FIXED, METAL FILM		EA	1
4	52	XDHZZ	0698-3407	28480	RESISTOR, FIXED, METAL FILM		EA	1
4	53	PAHZZ 5905-00-853-2322	0839-0011	28480	THERMISTOR		EA	1
4	54	PAHZZ 5961-00-957-0426	1902-0017	28480	SEMICONDUCTOR, ZENER		EA	2
4	55	PAHZZ 5961-00-104-8574	1902-0596	28480	SEMICONDUCTOR, ZENER		EA	1
4	55	PAHZZ 5961-00-931-7021	1902-0018	28480	SEMICONDUCTOR, ZENER (USED ON SN 548-651)		EA	1
4	56	XDHZZ	431A-60A	28480	COIL ASSEMBLY (USED ON SN 770 AND ABOVE)		EA	1

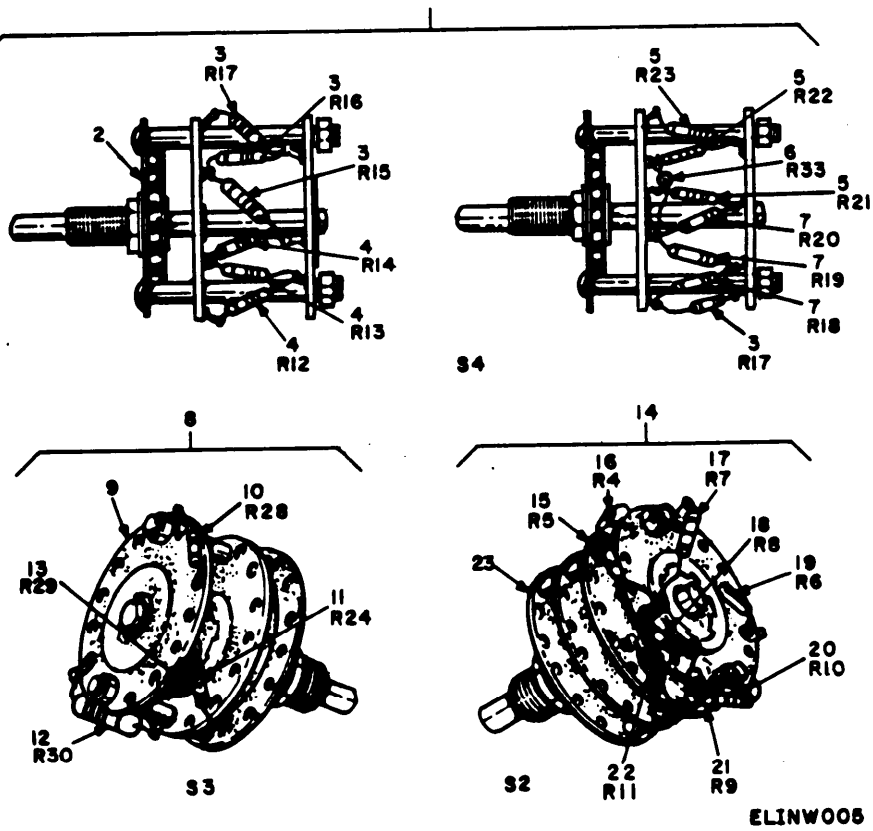
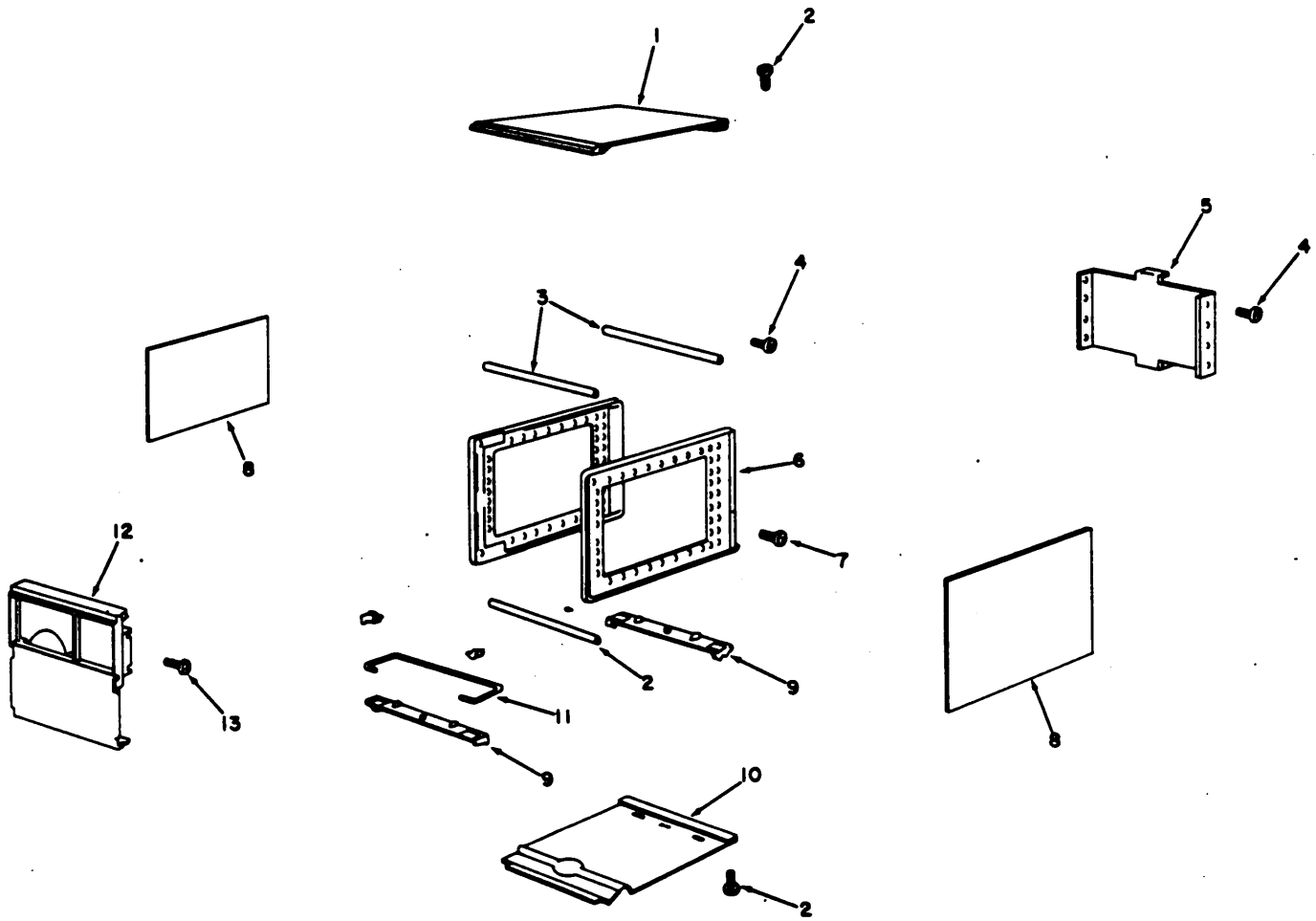


Figure 5. Switch assemblies.

SECTION II. REPAIR PARTS LIST (CONTINUED)

(1) ILLUSTRATION (A) FIG NO	(2) SMR (B) ITEM NO	(3) NATIONAL STOCK NUMBER	(4) PART NUMBER	(5) FSCM	(6) DESCRIPTION	(7) UNIT OF MEAS	(8) QTY INC IN UNIT
5	1	XDHZZ	00431-6024	28480	SWITCH ASSEMBLY, INCL R12-23 (USED ON SN 548-651)	EA	1
5	1	PAHHH 6625-00-724-1669	00431-6003	28480	SWITCH ASSEMBLY INCL R12-23	EA	1
5	2	PAHZZ 5930-00-791-2661	3100-1818	28480	SWITCH, ROTARY	EA	1
5	3	PAHZZ 5905-00-499-2011	0698-3566	28480	RESISTOR, FIXED, METAL FILM	EA	3
5	4	PAHZZ 5905-00-110-0850	0757-0277	28480	RESISTOR, FIXED, METAL FILM	EA	3
5	5	XDHZZ	0757-1104	28480	RESISTOR, FIXED, METAL FILM	EA	3
5	6	PAHZZ 5905-00-828-0409	0698-0063	28480	RESISTOR, FIXED, METAL FILM (USED O N SN 770 AND ABOVE)	EA	1
5	7	PAHZZ 5905-00-891-4210	0757-0395	28480	RESISTOR, FIXED, METAL FILM	EA	3
5	8	PAHHH 5905-00-724-1671	00431-6004	28480	SWITCH ASSEMBLY INCL R24, R28-R30	EA	1
5	9	PAHZZ 5905-00-791-2771	3100-1820	28480	SWITCH, ROTARY	EA	1
5	10	PAHZZ 5905-00-974-6078	0698-3160	28480	RESISTOR, FIXED, METAL FILM	EA	1
5	11	PAHZZ 5905-00-828-0397	0698-3449	28480	RESISTOR, FIXED, METAL FILM	EA	1
5	11	PAHZZ 5905-00-974-6078	0698-3160	28480	RESISTOR, FIXED, METAL FILM (USED ON SN 548-651)	EA	1
5	12	PAHZZ 5905-00-828-6705	0757-0821	28480	RESISTOR, FIXED, METAL FILM	EA	1
5	13	PAHZZ 5905-00-561-4382	0698-3404	28480	RESISTOR, FIXED, METAL FILM	EA	1
5	14	PAHHH 6625-00-724-1678	00431-6002	28480	SWITCH ASSEMBLY, INCL R4-R11	EA	1
5	15	PAHZZ 5905-00-891-4219	0757-0421	28480	RESISTOR, FIXED, METAL FILM	EA	1
5	16	PAHZZ 5905-00-246-8634	0698-3151	28480	RESISTOR, FIXED, METAL FILM	EA	1
5	17	PAHZZ 5905-00-858-8927	0698-3158	28480	RESISTOR, FIXED, METAL FILM	EA	1
5	18	PAHZZ 5905-00-853-8190	0757-0280	28480	RESISTOR, FIXED, METAL FILM	EA	1
5	19	PAHZZ 5905-00-974-6079	0698-3444	28480	RESISTOR, FIXED, METAL FILM	EA	1
5	20	PAHZZ 5905-00-788-0291	9757-0398	28480	RESISTOR, FIXED, METAL FILM	EA	1
5	21	PAHZZ 5905-00-974-6076	0698-3442	28480	RESISTOR, FIXED, METAL FILM	EA	1
5	22	PAHZZ 5905-00-972-4907	0757-0180	28480	RESISTOR, FIXED, METAL FILM	EA	1
5	23	XDHZZ	3100-1817	28480	SWITCH, ROTARY	EA	1



ELINWOOD

Figure 6. Mechanical parts.

SECTION II. REPAIR PARTS LIST (CONTINUED)

(1) ILLUSTRATION (A) FIG NO	(2) SMR (B) ITEM NO	(3) NATIONAL STOCK NUMBER	(4) PART NUMBER	(5) FSCM	(6) DESCRIPTION	(7) UNIT OF MEAS	(8) QTY INC IN UNIT
6	1	XDHZZ	5060-0720	28480	COVER, TOP	EA	1
6	2	PAHZZ 5305-00-059-4550	MS35190-235	96906	SCREW, PHILLIPS 6-32 X 5/16	EA	4
6	3	XDHZZ	5020-0701	28480	CABINET, SPACER	EA	3
6	4	XDHZZ	2370-0015	28480	SCREW, FLAT HEAD SLOT 6-32 X 3/8	EA	10
6	5	XDHZZ	00431-0003	28480	PANEL, REAR	EA	1
6	6	PAHZZ 6625-00-412-1207	5060-0703	28480	FRAME ASSEMBLY	EA	2
6	7	PAHZZ 5305-00-757-6645	MS35190-233	96906	SCREW, FLAT HEAD, PHILLIPS 6-32 X 3/16	EA	8
6	8	XDHZZ	5000-0703	28480	COVER, SIDE	EA	2
6	9	PAHZZ 6625-00-112-9509	5060-0728	28480	FOOT ASSEMBLY, HALF MODULE	EA	2
6	10	XDHZZ	5000-0717	28480	COVER, BOTTOM	EA	1
6	11	PAHZZ 5340-00-978-7859	5040-0700	28480	HINGE	EA	1
6	12	XDHZZ	00431-0002	28480	PANEL, FRONT	EA	1
6	13	PAHZZ 5340-00-457-1275	2370-0002	28480	SCREW, FLAT HEAD, SLOT 6-32 X 3/8		

SECTION IV NATIONAL STOCK NUMBER AND PART NUMBER INDEX

STOCK NUMBER	FIG NO	ITEM NO	STOCK NUMBER	FIG NO	ITEM NO
5305-00-059-4550	6	2	5905-00-828-0409	5	6
5305-00-757-6645	6	7	5905-00-828-0414	4	21
5340-00-457-1275	6	13	5905-00-828-6705	5	12
5340-00-978-7859	6	11	5905-00-830-6188	2	23
5355-00-809-9330	2	2	5905-00-835-2819	4	32
5355-00-919-9953	2	3	5905-00-853-2322	4	53
5355-00-976-4343	2	1	5905-00-853-8190	3	32
5905-00-105-1773	4	16	5905-00-853-8190	5	18
5905-00-105-1773	4	40	5905-00-858-6792	4	23
5905-00-110-0850	5	4	5905-00-858-6795	3	31
5905-00-115-7158	4	17	5905-00-858-6795	4	24
5905-00-221-8310	3	29	5905-00-858-6799	4	44
5905-00-221-8310	4	33	5905-00-858-8826	4	42
5905-00-221-8310	4	37	5905-00-858-8826	4	50
5905-00-246-8634	5	16	5905-00-858-8927	5	17
5905-00-433-6904	3	34	5905-00-858-8959	3	23
5905-00-499-2009	4	41	5905-00-858-8959	4	46
5905-00-499-2011	5	3	5905-00-858-9105	3	45
5905-00-499-2013	4	25	5905-00-858-9105	4	36
5905-00-561-4382	5	13	5905-00-858-9417	3	27
5905-00-561-4512	3	60	5905-00-879-5361	3	43
5905-00-561-4512	4	28	5905-00-877-5747	4	18
5905-00-561-4553	3	22	5905-00-877-5747	4	19
5905-00-561-4653	3	24	5905-00-877-5747	4	20
5905-00-724-1671	5	8	5905-00-877-5747	4	30
5905-00-764-2026	4	43	5905-00-877-5757	4	16
5905-00-769-5449	4	40	5905-00-877-5757	4	17
5905-00-788-0291	5	20	5905-00-877-5769	4	27
5905-00-791-2771	5	9	5905-00-877-8955	3	21
5905-00-826-3237	3	51	5905-00-891-4210	5	7
5905-00-826-3238	3	53	5905-00-891-4218	4	19
5905-00-826-3239	3	37	5905-00-891-4219	5	15
5905-00-826-3241	3	52	5905-00-891-4221	4	18
5905-00-826-3256	3	58	5905-00-891-4229	4	20
5905-00-826-3262	3	42	5905-00-891-4229	4	30
5905-00-826-3264	3	47	5905-00-904-4412	3	36
5905-00-826-3281	3	56	5905-00-911-5782	4	48
5905-00-826-3282	3	48	5905-00-917-0580	3	28
5905-00-826-3284	3	55	5905-00-917-0580	3	59
5905-00-826-3288	3	49	5905-00-918-7642	3	19
5905-00-826-3306	3	54	5905-00-927-5070	4	16
5905-00-826-3315	3	50	5905-00-927-5070	4	18
5905-00-826-3316	4	22	5905-00-927-5071	4	16
5905-00-828-0375	3	26	5905-00-929-7774	4	31
5905-00-828-0377	3	38	5905-00-930-8643	2	21
5905-00-828-0388	4	35	5905-00-954-8684	3	25
5905-00-828-0397	3	46	5905-00-954-8684	4	47
5905-00-828-0397	5	11	5905-00-972-4907	4	45
5905-00-828-0404	3	44	5905-00-972-4907	5	22
5905-00-828-0409	4	29	5905-00-974-6073	3	41

SECTION IV NATIONAL STOCK NUMBER AND PART NUMBER INDEX (CONTINUED)

STOCK NUMBER	FIG NO	ITEM NO	STOCK NUMBER	FIG NO	ITEM NO
5905-00-974-6075	3	59	5950-00-089-9738	3	63
5905-00-974-6076	5	21	5950-00-761-8876	3	14
5905-00-974-6078	3	40	5950-00-761-8877	3	61
5905-00-974-6078	5	10	5950-00-761-8878	3	62
5905-00-974-6078	5	11	5950-00-761-8879	3	15
5905-00-974-6079	2	19	5950-00-891-4206	2	22
5905-00-974-6079	5	19	5961-00-060-8638	4	11
5905-00-974-6084	3	33	5961-00-060-8638	4	12
5905-00-974-6080	3	35	5961-00-104-8574	4	55
5905-00-976-3418	4	34	5961-00-137-4608	3	17
5905-00-976-3418	4	36	5961-00-137-4608	4	15
5905-00-976-3418	4	39	5961-00-752-5226	4	10
5905-00-981-7478	4	26	5961-00-904-2540	3	16
5905-00-981-7513	3	20	5961-00-904-2540	4	13
5905-00-981-7529	2	23	5961-00-931-7021	4	55
5905-00-981-7529	4	28	5961-00-931-7022	3	13
5905-00-998-1792	3	39	5961-00-954-9182	3	12
5905-00-998-1792	4	37	5961-00-957-0426	4	54
5905-00-998-1792	4	39	5961-00-978-7468	3	11
5905-00-998-1792	4	49	5961-00-978-9041	4	14
5905-00-998-1814	3	30	5970-00-225-8549	2	14
5905-00-990-0303	4	38	5970-00-269-7037	2	13
5910-00-059-2305	2	24	5995-00-484-1104	1	2
5910-00-067-8305	4	1	5995-00-995-9822	1	2
5910-00-080-1890	3	9	6210-00-761-8898	2	6
5910-00-089-3496	3	2	6625-00-112-9509	6	9
5910-00-104-0145	3	4	6625-00-112-9510	2	26
5910-00-472-5004	3	3	6625-00-412-1207	6	6
5910-00-542-1796	4	8	6625-00-724-1669	5	1
5910-00-542-2010	4	3	6625-00-724-1678	5	14
5910-00-803-4373	3	5	6625-00-724-1679	2	20
5910-00-809-3431	4	7	6625-00-735-7489	2	26
5910-00-851-7794	4	4	6625-00-833-2336	2	16
5910-00-883-0838	3	7	6625-00-890-3022	2	27
5910-00-883-0838	4	5	6625-00-935-5053	2	27
5910-00-889-4854	4	6	6625-00-917-3099	1	1
5910-00-893-5182	4	9			
5910-00-912-7614	3	3			
5910-00-914-2605	3	1			
5910-00-918-4348	2	18			
5910-00-965-9722	3	6			
5920-00-543-0006	2	7			
5920-00-798-5710	2	7			
5920-00-881-4636	2	8			
5930-00-406-8746	2	9			
5930-00-791-2661	5	2			
5935-00-804-5144	2	15			
5935-00-877-2663	2	5			
5935-00-999-4723	2	25			
5940-00-815-2612	2	11			

SECTION IV NATIONAL STOCK NUMBER AND PART NUMBER INDEX -CONTINUED

PART NO	FSCM	FIG NO	ITEM NO	PART NO	FSCM	FIG NO	ITEM NO
D34114	56289	4	7	0698-3337	28480	4	21
D36254	56289	4	1	0698-3404	28480	5	13
H-1061-2	60427	2	10	0698-3407	28480	4	52
MS35190-233	96906	6	7	0698-3411	28480	4	51
MS35190-235	96906	6	2	0698-3438	28480	3	35
00431-0002	28480	6	12	0698-3440	28480	3	38
00431-0003	28480	6	5	0698-3442	28480	5	21
00431-6001	28480	2	27	0698-3444	28480	2	19
00431-6002	28480	5	14	0698-3444	28480	5	19
00431-6003	28480	5	1	0698-3447	28480	3	44
00431-6004	28480	5	8	0698-3449	28480	3	46
00431-6005	28480	2	20	0698-3449	28480	5	11
00431-6009	28480	2	26	0698-3450	28480	3	42
00431-6018	28480	2	27	0698-3452	28480	3	37
00431-6019	28480	2	26	0698-3491	28480	4	41
00431-6024	28480	5	1	0698-3566	28480	5	3
00431-6025	28480	2	20	0698-3581	28480	4	25
0121-0035	28480	2	18	0698-3582	28480	4	28
0140-0159	28480	3	10	0698-3582	28480	3	60
0140-0198	28480	3	1	0698-4023	28480	3	53
0150-0012	28480	4	4	0698-4024	28480	3	52
0150-0096	28480	4	8	0698-4025	28480	3	51
0150-0093	28480	4	3	0698-4026	28480	3	50
0160-0136	28480	3	3	0698-4027	28480	3	49
0160-0185	28480	3	3	0698-4028	28480	3	47
0160-2201	28480	3	2	0698-4029	28480	3	48
0180-0049	28480	3	8	0698-4030	28480	3	58
0340-0086	28480	2	13	0698-4031	28480	3	57
0340-0090	28480	2	14	0698-4032	28480	3	56
0370-0064	28480	2	1	0698-4033	28480	3	55
0370-0067	28480	2	2	0698-4034	28480	3	54
0370-0112	28480	2	3	0698-4722	28480	2	17
0698-XXXX	28480	2	17	0699-0003	28480	4	32
0698-0063	28480	5	6	0757-0123	28480	3	25
0698-0063	28480	4	29	0757-0123	28480	4	47
0698-0082	28480	3	59	0757-0180	28480	5	22
0698-0084	28480	3	41	0757-0180	28480	4	45
0698-0085	28480	3	30	0757-0198	28480	2	23
0698-3132	28480	4	35	0757-0199	28480	3	20
0698-3151	28480	5	16	0757-0274	28480	3	45
0698-3155	28480	4	34	0757-0274	28480	4	36
0698-3155	28480	4	39	0757-0277	28480	5	4
0698-3155	28480	4	36	0757-0278	28480	4	38
0698-3156	28480	3	33	0757-0279	28480	3	29
0698-3157	28480	3	34	0757-0279	28480	4	33
0698-3158	28480	5	17	0757-0279	28480	4	37
0698-3160	28480	5	10	0757-0280	28480	3	32
0698-3160	28480	5	11	0757-0280	28480	5	18
0698-3160	28480	3	40	0757-0290	28480	4	42

SECTION IV NATIONAL STOCK NUMBER AND PART NUMBER INDEX (CONTINUED)

PART NO	FSCM	FIG NO	ITEM NO	PART NO	FSCM	FIG NO	ITEM NO
0757-0290	28480	4	50	1853-0020	28480	4	13
0757-0395	28480	5	7	1854-0071	28480	3	17
0757-0399	28480	4	31	1854-0071	28480	4	15
0757-0401	28480	2	23	1901-0016	28480	4	10
0757-0401	28480	4	28	1901-0025	28480	3	11
0757-0417	28480	3	27	1901-0026	28480	4	12
0757-0421	28480	5	15	1901-0450	28480	3	13
0757-0436	28480	4	23	1902-0017	28480	4	54
0757-0439	28480	4	38	1902-0018	28480	4	55
0757-0440	28480	3	31	1902-0596	28480	4	55
0757-0440	28480	4	24	1910-0016	28480	3	12
0757-0441	28480	4	44	1910-0016	28480	4	11
0757-0442	28480	3	39	2N1183	81349	4	14
0757-0442	28480	4	37	2100-0144	28480	3	43
0757-0442	28480	4	39	2100-0182	28480	4	40
0757-0442	28480	4	49	2100-0342	28480	2	21
0757-0448	28480	4	48	2100-1612	28480	4	16
0757-0451	28480	4	26	2100-1612	28480	4	18
0757-0456	28480	4	27	2100-1613	28480	4	16
0757-0460	28480	4	46	2100-1615	28480	4	18
0757-0463	28480	4	43	2100-1615	28480	4	19
0757-0465	28480	3	36	2100-1615	28480	4	20
0757-0466	28480	3	23	2100-1615	28480	4	30
0757-0821	28480	5	12	2100-1616	28480	4	18
0757-0826	28480	4	22	2100-1616	28480	4	19
0757-1094	28480	3	28	2100-1617	28480	4	16
0757-1094	28480	3	59	2100-1617	28480	4	17
0757-1104	28480	5	5	2100-1770	28480	4	20
0811-0065	28480	3	19	2100-1770	28480	4	30
0811-0066	28480	3	18	2100-1771	28480	4	19
0811-1562	28480	4	32	2100-1772	28480	4	18
0811-1566	28480	3	26	2100-1773	28480	4	17
0811-1571	28480	3	21	2100-1774	28480	4	16
0811-1572	28480	3	22	2100-1774	28480	4	40
0811-1645	28480	3	24	2100-2631	28480	2	21
0839-0011	28480	4	53	2110-0004	28480	2	7
1120-1101	28480	2	16	2370-0002	28480	6	13
114P1042R5S3	56289	3	6	2370-0015	28480	6	4
1250-0083	28480	2	15	30D106G025BB4	56289	4	6
1251-0149	28480	2	5	30D206G025DB-6M1	56289	3	9
1251-0233	28480	2	25	30206G050DC6M1	56289	4	2
1251-1280	28480	2	5	30D207G003DC4	56289	4	9
1251-1281	28480	2	4	3100-1817	28480	5	23
1251-2239	28480	2	25	3100-1818	28480	5	2
1450-0048	28480	2	6	3100-1820	28480	5	9
150D606X0006B2	56289	3	5	3101-1234	28480	2	9
150D685X9035B2	56289	3	4	313.150	75915	2	7
1510-0006	28480	2	11	342014	75915	2	8
1510-0007	28480	2	12	36C219A	56289	2	24
1853-0020	28480	3	16	431A-60A	28480	4	56

SECTION IV NATIONAL STOCK NUMBER AND PART NUMBER INDEX (CONTINUED)

PART NO	FSCM	FIG NO	ITEM NO	PART NO	FSCM	FIG NO	ITEM NO
431C	28480	1	1				
5C11A	56289	3	7				
5C11A	56289	4	5				
5000-0703	28480	6	8				
5000-0717	28480	6	10				
5020-0701	28480	6	3				
5040-0700	28480	6	11				
5060-0703	28480	6	6				
5060-0720	28480	6	1				
5060-0728	28480	6	9				
8120-0078	28480	1	2				
8120-1082	28480	1	2				
9100-0400	28480	2	22				
9100-1677	28480	3	63				
9110-0040	28480	3	15				
9120-0065	28480	3	62				
9120-0066	28480	3	61				
9140-0122	28480	5	14				
9757-0398	28480	5	20				

RECOMMENDED CHANGES TO EQUIPMENT TECHNICAL MANUALS



SOMETHING WRONG WITH THIS MANUAL?

THEN... JOT DOWN THE DOPE ABOUT IT ON THIS FORM, TEAR IT OUT, FOLD IT AND DROP IT IN THE MAIL!

FROM: (YOUR UNIT'S COMPLETE ADDRESS)

Commander
Stateside Army Depot
ATTN: AMSTA-US
Stateside, N.J. 07703

DATE 10 July 1975

PUBLICATION NUMBER

TM 11-5840-340-12

DATE

23 Jan 74

TITLE

Radar Set AN/SPC-76

BE EXACT... PIN-POINT WHERE IT IS

PAGE NO.	PARA-GRAPH	FIGURE NO.	TABLE NO.
2-25	2-28		
3-10	3-3		3-1
5-6	5-8		
		FO3	

IN THIS SPACE TELL WHAT IS WRONG AND WHAT SHOULD BE DONE ABOUT IT:

Recommend that the installation antenna alignment procedure be changed through to specify a 2° IFF antenna lag rather than 1°.

REASON: Experience has shown that with only a 1° lag, the antenna servo system is too sensitive to wind gusting in excess of 25 knots, and has a tendency to rapidly accelerate and decelerate as it hunts, causing strain to the drive train. Hunting is minimized by adjusting the lag to 2° without degradation of operation.

Item 5, Function column. Change "2 db" to "3db."

REASON: The adjustment procedure for the TRANS POWER FAULT indicator calls for a 3 db (500 watts) adjustment to light the TRANS POWER FAULT indicator.

Add new step f.1 to read, "Replace cover plate removed in step e.1, above."

REASON: To replace the cover plate.

Zone C 3. On J1-2, change "+24 VDC to "+5 VDC."

REASON: This is the output line of the 5 VDC power supply. + 24 VDC is the input voltage.

TEAR ALONG DOTTED LINE

TYPED NAME, GRADE OR TITLE, AND TELEPHONE NUMBER

SSG I. M. DeSpiritof 999-1776

SIGN HERE:

SSG I. M. DeSpiritof

DA FORM 2028-2 (TEST) 1 AUG 74

P.S.--IF YOUR OUTFIT WANTS TO KNOW ABOUT YOUR MANUAL "FIND" MAKE A CARBON COPY OF THIS AND GIVE IT TO YOUR HEADQUARTERS.

HISA 1686-75

RECOMMENDED CHANGES TO EQUIPMENT TECHNICAL MANUALS



SOMETHING WRONG WITH THIS MANUAL?

THEN... JOT DOWN THE DOPE ABOUT IT ON THIS FORM, TEAR IT OUT, FOLD IT AND DROP IT IN THE MAIL!

FROM: (YOUR UNIT'S COMPLETE ADDRESS)

DATE

PUBLICATION NUMBER

DATE

TITLE

BE EXACT... PIN-POINT WHERE IT IS

IN THIS SPACE TELL WHAT IS WRONG AND WHAT SHOULD BE DONE ABOUT IT:

PAGE NO.

PARA-GRAPH

FIGURE NO.

TABLE NO.

TEAR ALONG DOTTED LINE

TYPED NAME, GRADE OR TITLE, AND TELEPHONE NUMBER

SIGN HERE:

DA FORM 2028-2 (TEST)
1 AUG 74

P.S.--IF YOUR OUTFIT WANTS TO KNOW ABOUT YOUR MANUAL "FIND," MAKE A CARBON COPY OF THIS AND GIVE IT TO YOUR HEADQUARTERS.

FILL IN YOUR
UNIT'S ADDRESS

FOLD BACK

DEPARTMENT OF THE ARMY

POSTAGE AND FEES PAID
DEPARTMENT OF THE ARMY
DDO-314



OFFICIAL BUSINESS

PENALTY FOR PRIVATE USE, \$300

TEAR ALONG DOTTED LINE

FOLD BACK

REVERSE OF DA FORM 2028-2 (TEST)



SOMETHING WRONG WITH THIS MANUAL?

THEN... JOT DOWN THE DOPE ABOUT IT ON THIS FORM, TEAR IT OUT, FOLD IT AND DROP IT IN THE MAIL!

FROM: (YOUR UNIT'S COMPLETE ADDRESS)

DATE

PUBLICATION NUMBER

DATE

TITLE

BE EXACT... PIN-POINT WHERE IT IS

IN THIS SPACE TELL WHAT IS WRONG AND WHAT SHOULD BE DONE ABOUT IT:

PAGE NO.

PARA-GRAPH

FIGURE NO.

TABLE NO.

TEAR ALONG DOTTED LINE

TYPED NAME, GRADE OR TITLE, AND TELEPHONE NUMBER

SIGN HERE:

FILL IN YOUR
UNIT'S ADDRESS

FOLD BACK

DEPARTMENT OF THE ARMY

OFFICIAL BUSINESS
PENALTY FOR PRIVATE USE, \$300

POSTAGE AND FEES PAID
DEPARTMENT OF THE ARMY
DOD-314



Commander
US Army Electronics Command
ATTN: DRSEL-MA-Q
Fort Monmouth, New Jersey 07703

TEAR ALONG DOTTED LINE



SOMETHING WRONG WITH THIS MANUAL?

THEN... JOT DOWN THE DOPE ABOUT IT ON THIS FORM, TEAR IT OUT, FOLD IT AND DROP IT IN THE MAIL!

FROM: (YOUR UNIT'S COMPLETE ADDRESS)

DATE

PUBLICATION NUMBER

DATE

TITLE

BE EXACT... PIN-POINT WHERE IT IS

IN THIS SPACE TELL WHAT IS WRONG AND WHAT SHOULD BE DONE ABOUT IT:

PAGE NO.

PARA-GRAPH

FIGURE NO.

TABLE NO.

TEAR ALONG DOTTED LINE

TYPED NAME, GRADE OR TITLE, AND TELEPHONE NUMBER

SIGN HERE:

FILL IN YOUR
UNIT'S ADDRESS

FOLD BACK

DEPARTMENT OF THE ARMY

OFFICIAL BUSINESS

PENALTY FOR PRIVATE USE, \$300

POSTAGE AND FEES PAID
DEPARTMENT OF THE ARMY
DOD-314



Commander
US Army Electronics Command
ATTN: DRSEL-MA-Q
Fort Monmouth, New Jersey 07703

TEAR ALONG DOTTED LINE

FOLD BACK

By Order of the Secretary of the Army:

FRED C. WEYAND
General United States Army
Chief of Staff

Official:

PAUL T. SMITH
Major General, United States Army
The Adjutant General

Distribution:

Active Army

USASA(2)	USA Ascom Depot(3)
OS Maj Comd(2)	USA Cp Carroll Depot (2)
USMC(5)	Units org under fol TOE (1)
USACC-CONUS(3)	11-15
USACC-EUR(3)	11-45
USA-PAC(3)	11-97
USACC-Sig Gp, Okinawa(3)	11-98
USACC-Japan(5)	11-302
USACC-Comm)p Fat, Korea(3)	11-303
USACC-Sig Gp, Taiwan(2)	11-347
LOGCOMDS(5)	11-357
Eight USA(5)	11-367
SigFLDMS(PAC)(Europe)(1)	11-368
LBAD(5)	11-377
SAAD(10)	11-500(AA-AC)
TOAD(10)	29-118
USACSA(2)	29-134
TECOM(2)	29-130
HISA(ECOM)(33)	29-137

NG: None

USAR: None

For explanation of abbreviations used see, AR310-50

DEPARTMENT OF THE ARMY
US ARMY AG PUBLICATIONS CENTER
1655 WOODSON ROAD
ST. LOUIS, MISSOURI 63114

OFFICIAL BUSINESS
PENALTY FOR PRIVATE USE, \$300

POSTAGE AND FEES PAID
DEPARTMENT OF THE ARMY
DOD 314
FOURTH CLASS

